

# Svarog Laser Welder



technological  
equipment

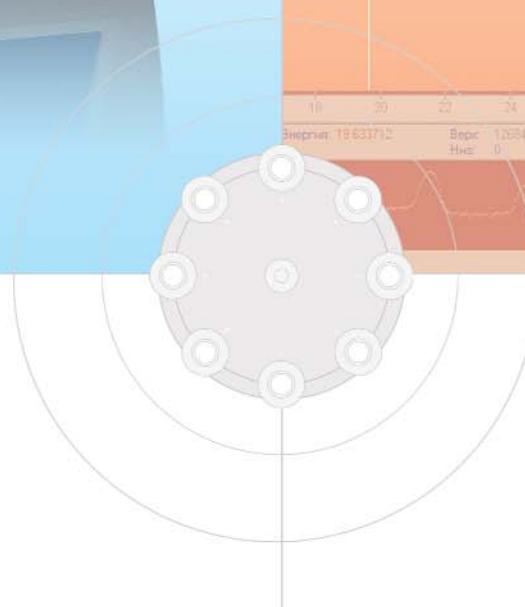
The **Svarog table-top Laser Welder** is intended for welding, deposition, surface thermostrengthening, and to make apertures in any metals. The main feature of the laser welding is locality of effect, that allows preventing any deformations of treated article. Small size and weight of the Laser Welder, 220 V, 5 A supply circuit, and

internal closed loop cooling system provide its mobility and allows its usage for large production runs as well as for single repairs in small workshops. Wide range of working regimes allows welding of different metals with thickness from few microns up to millimeters. **The Svarog Laser Welder** is equipped with TV system of workpiece viewing.

## Technical Specifications

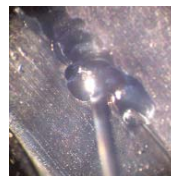
Solid state laser with flash-lamp pumping	
Wavelength	1,06 μm
Output pulse energy	0.2 - 10 joules
Pulse frequency	0.5-30 Hz
Pulse duration	0.5-10.0 milliseconds
Max. average power	50 W
Spot diameter	0.3-1.0mm
Input power	220VAC, 50Hz, 5 amps, single-phase
Dimensions	700 x 500 x 440 mm
Cooling system	single-circuit
Coolant	distilled water, 2 liters

ELVATECH Ltd.  
20 Polyarnaya str.,  
Kiev, 04209, Ukraine  
tel.: (+38 044) 495 11 43  
tel./fax: (+38 044) 412 06 81  
office@elvatech.com



Use the Svarog to:

Repair casting defects, such as porosity, with wire filler.



Repair delicate jewelry art-works, including stone-set items, articles with spring elements, etc.  
Assembly of complicated jewelry without preliminary fixture into wax  
Assembly and repair of thin-walled and cored items

